

# Session 7: Imaging in acute stroke

## Pitfalls in early stroke diagnosis

Dr. Shriram Varadharajan

DM Neuroimaging and Interventional Neuroradiology

Consultant Neuroimaging and Stroke

KMCH, Coimbatore



# DISCLOSURE STATEMENT OF FINANCIAL INTEREST

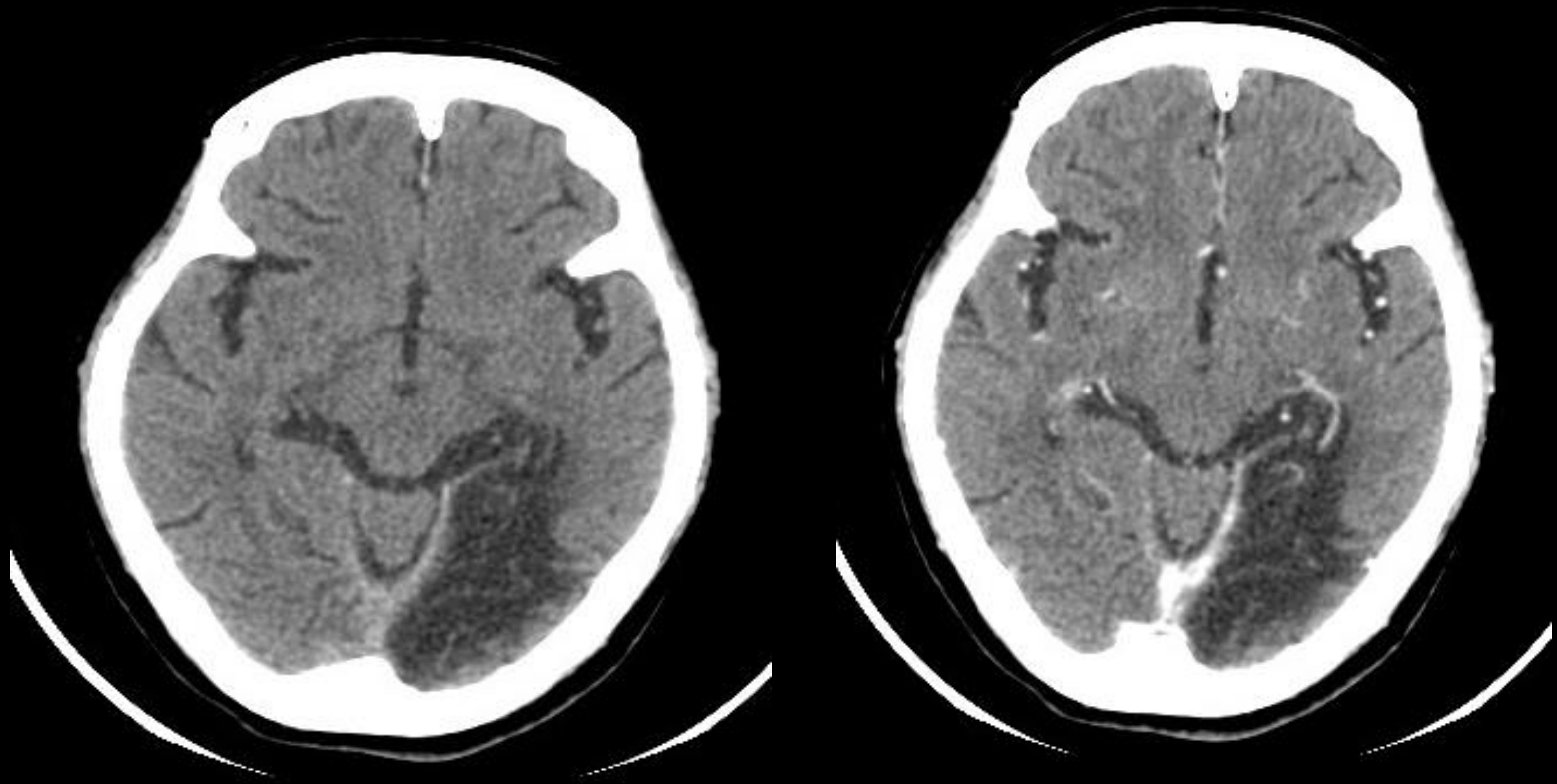
None



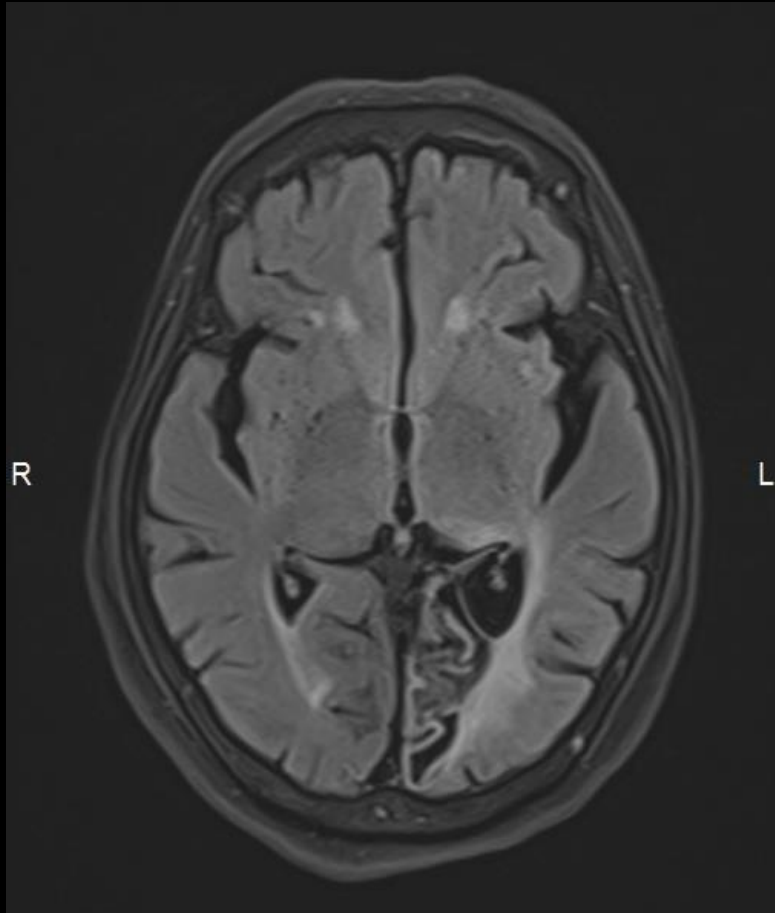
# DISCLOSURE STATEMENT OF FINANCIAL INTEREST

I, Shriram Varadharajan DO NOT have a financial interest/arrangement or affiliation with one or more organizations that could be perceived as a real or apparent conflict of interest in the context of the subject of this presentation.

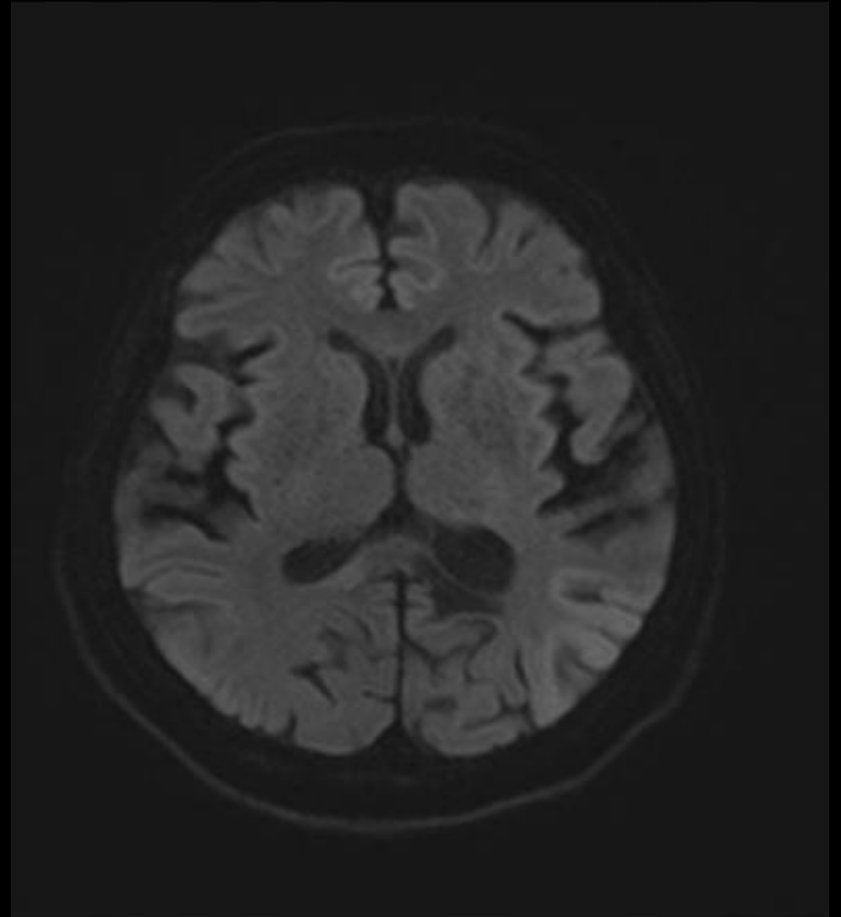
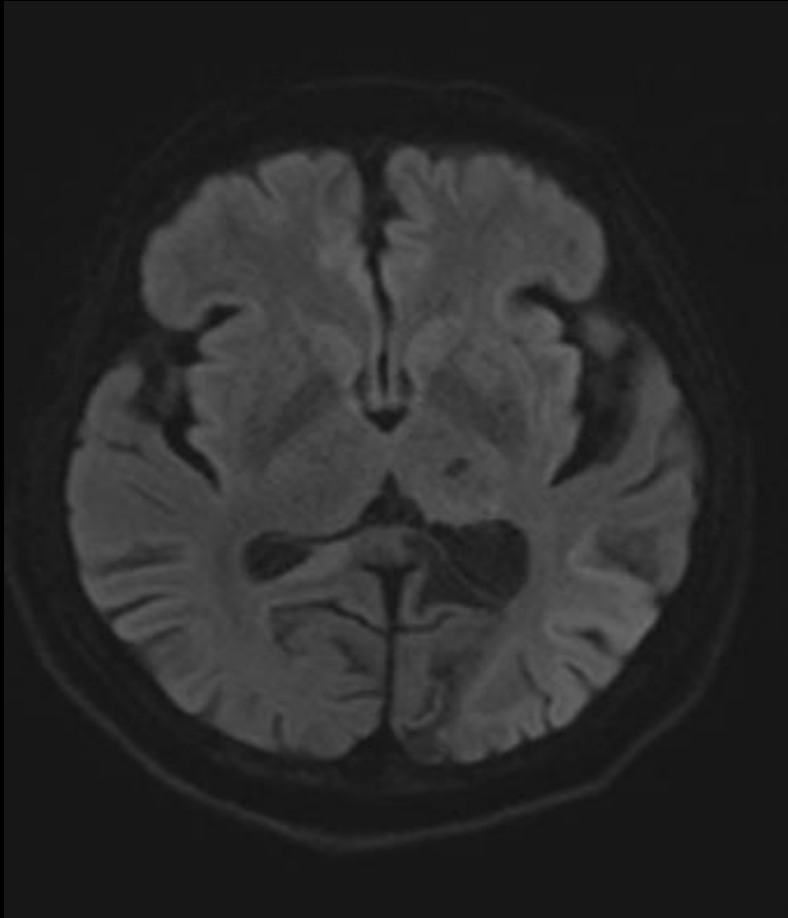
# Stroke sequelae



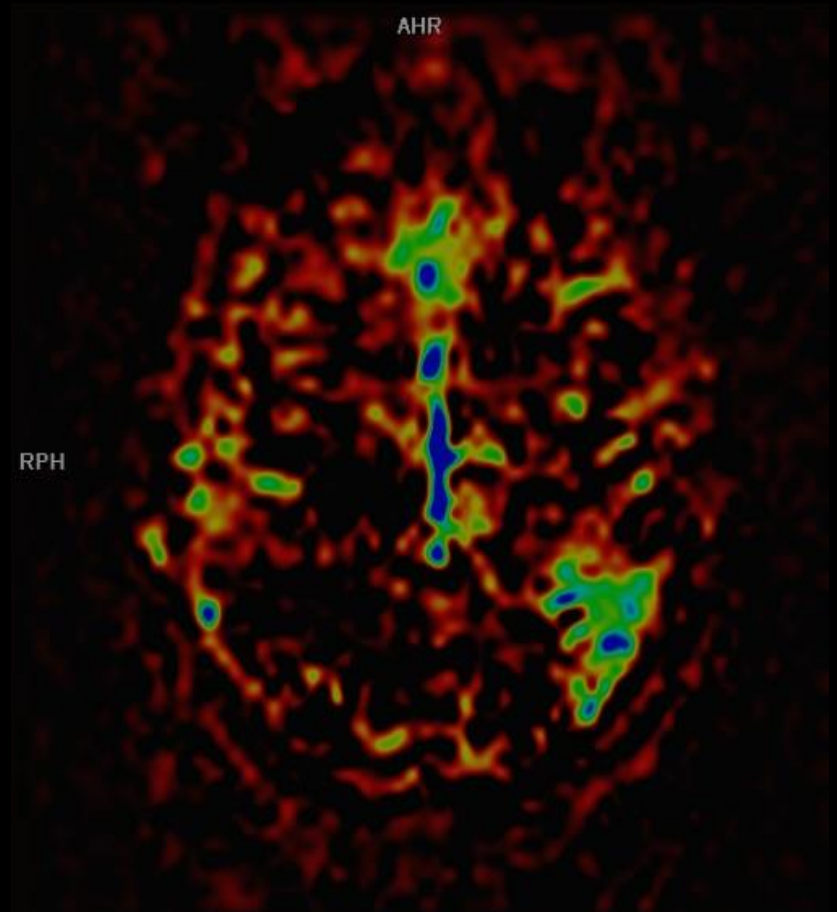
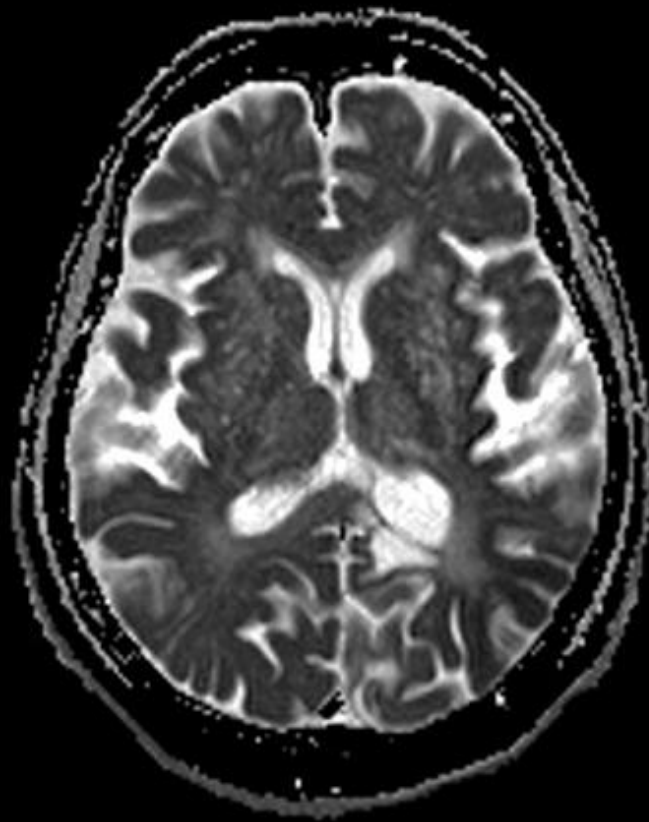
# Stroke sequelae



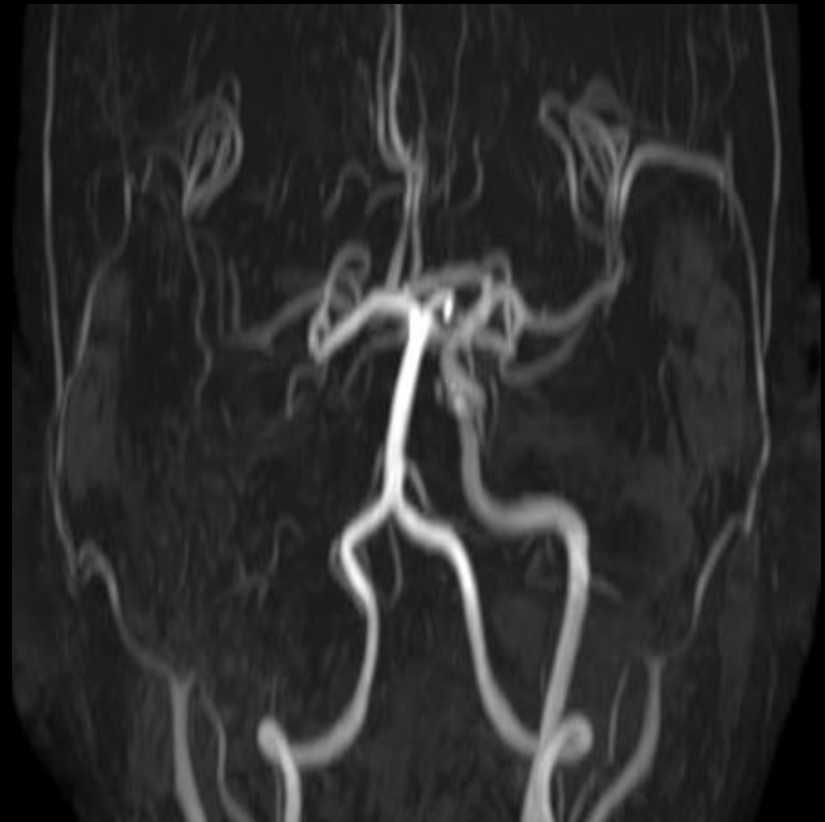
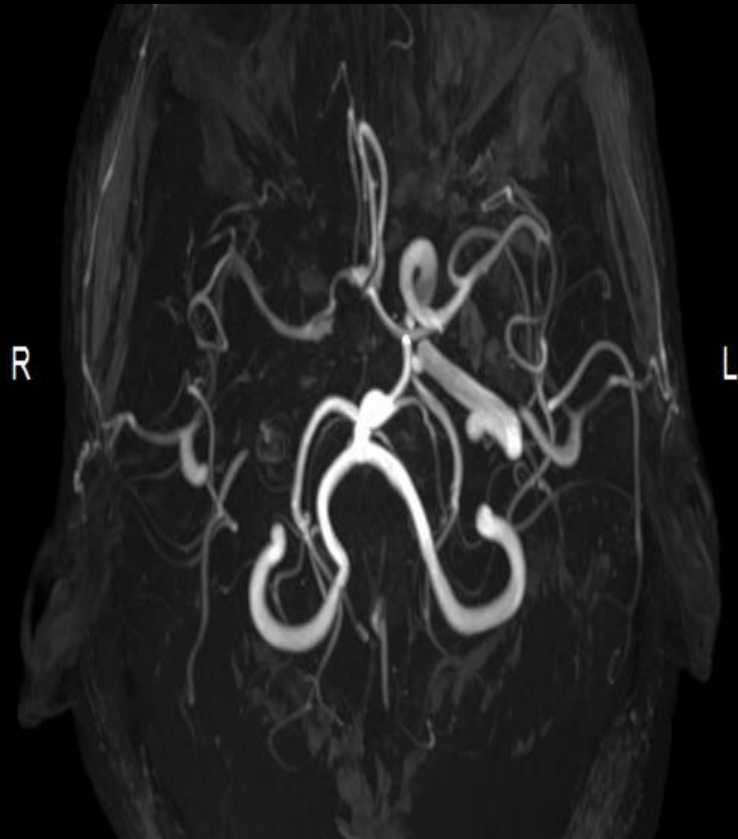
# Stroke sequelae



# Post Ictal Hyperperfusion

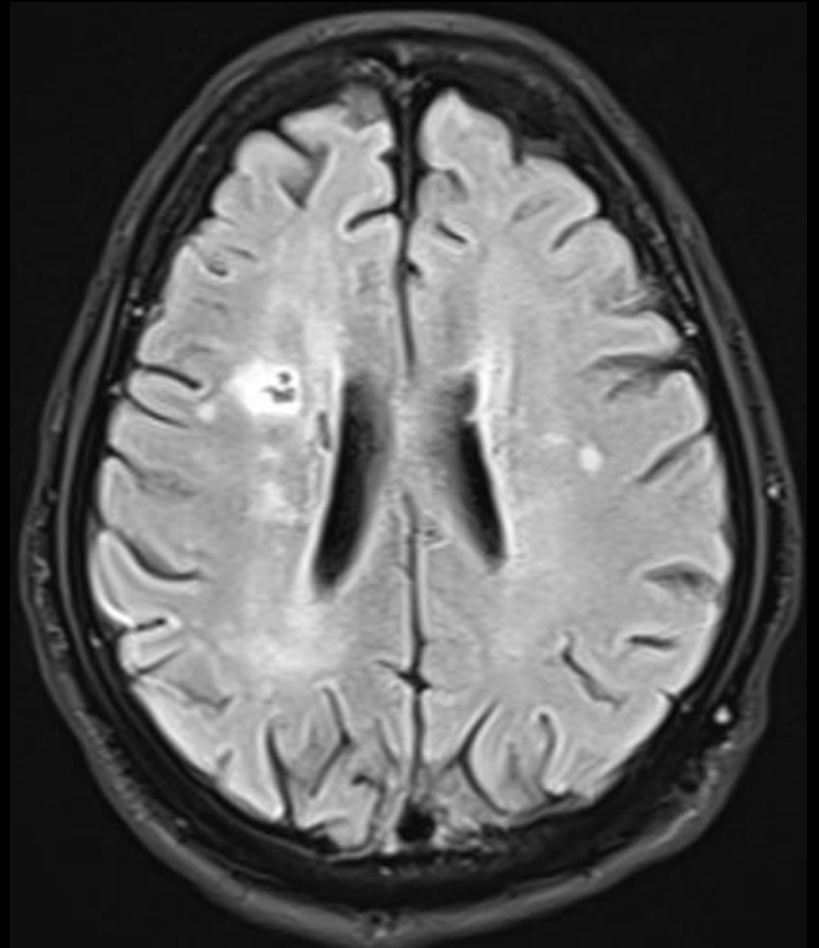
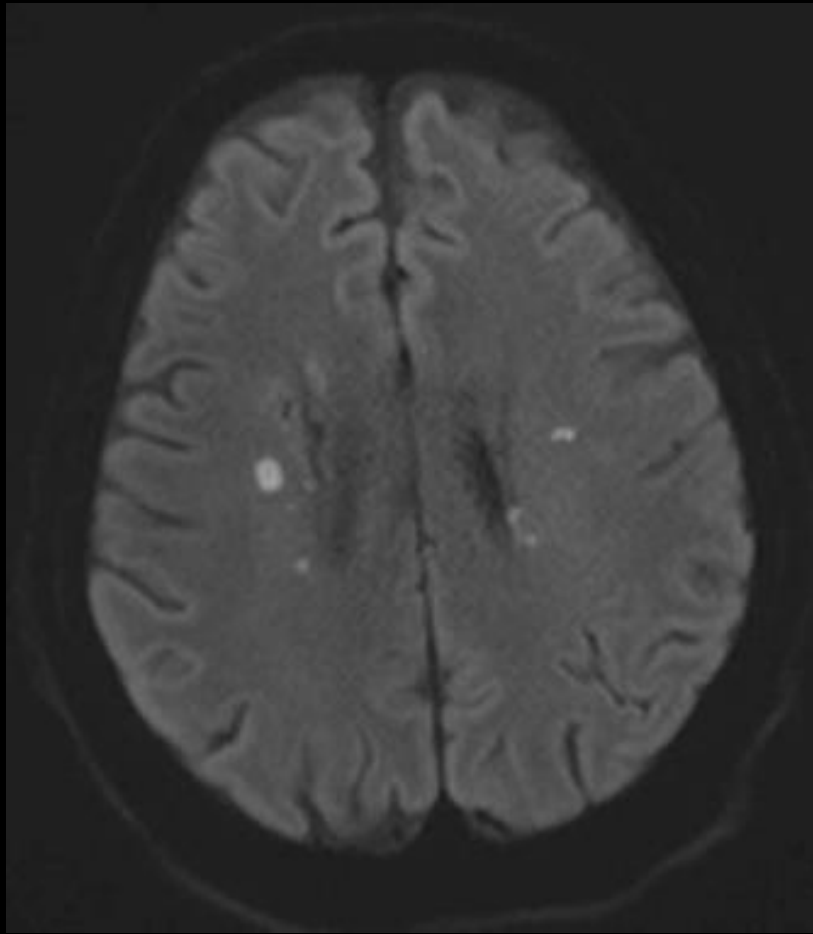


# Secondary occlusion

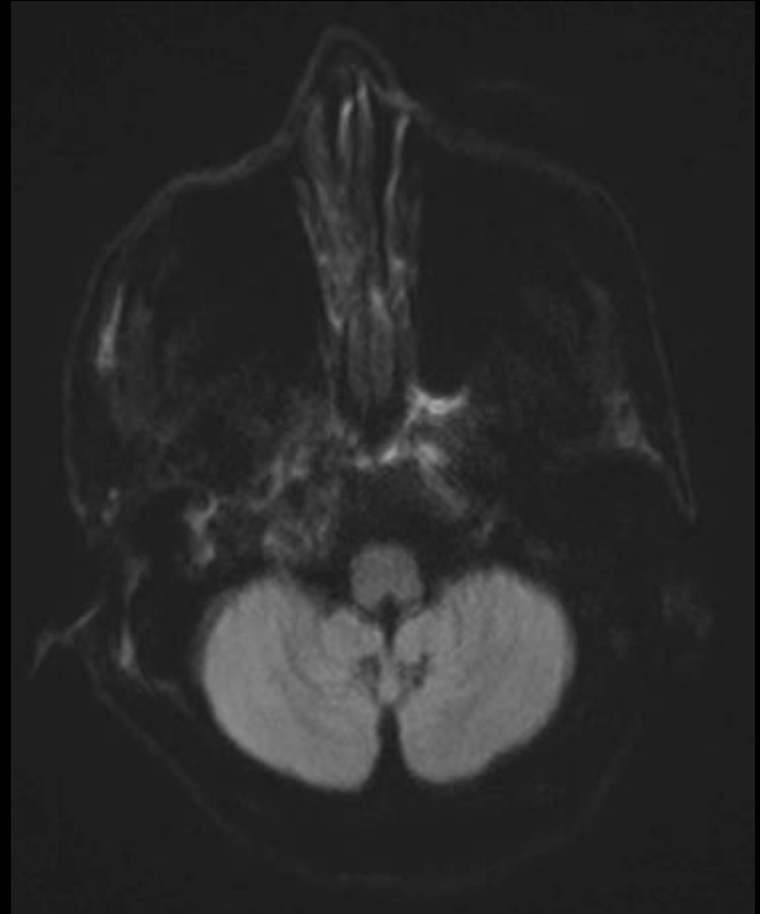
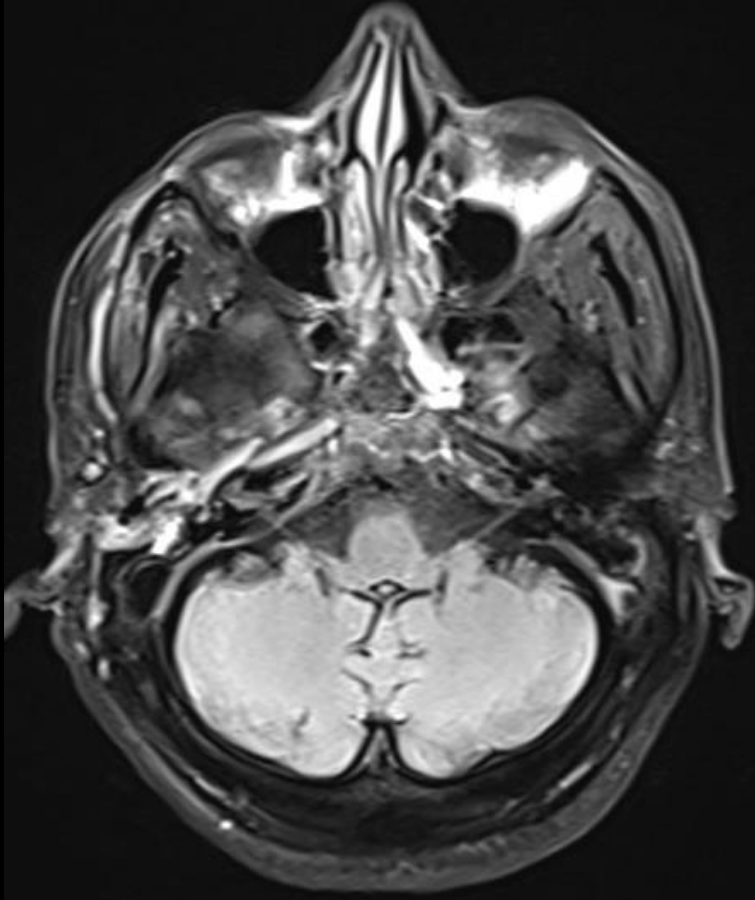




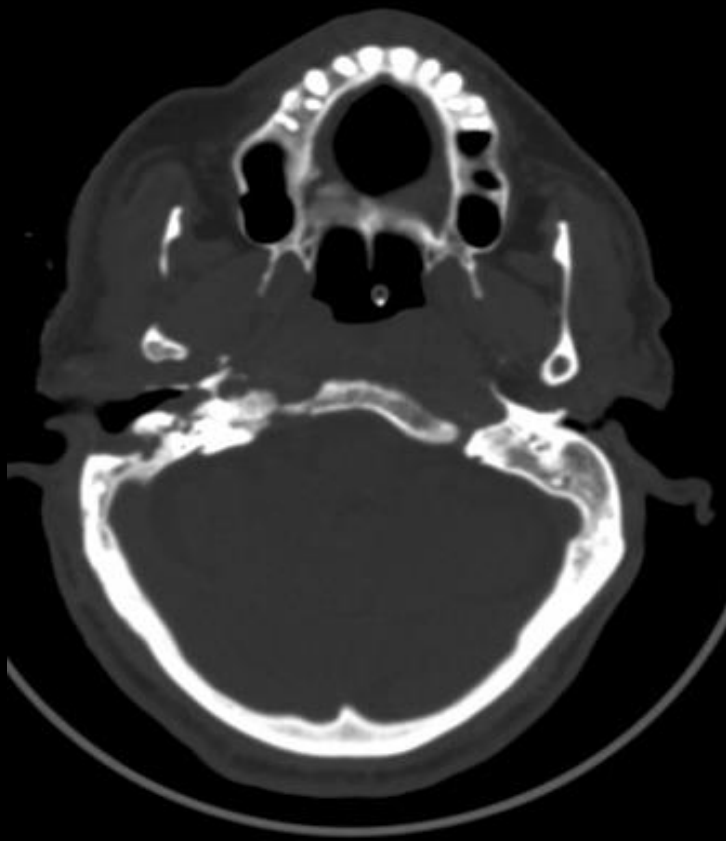
## Secondary occlusion



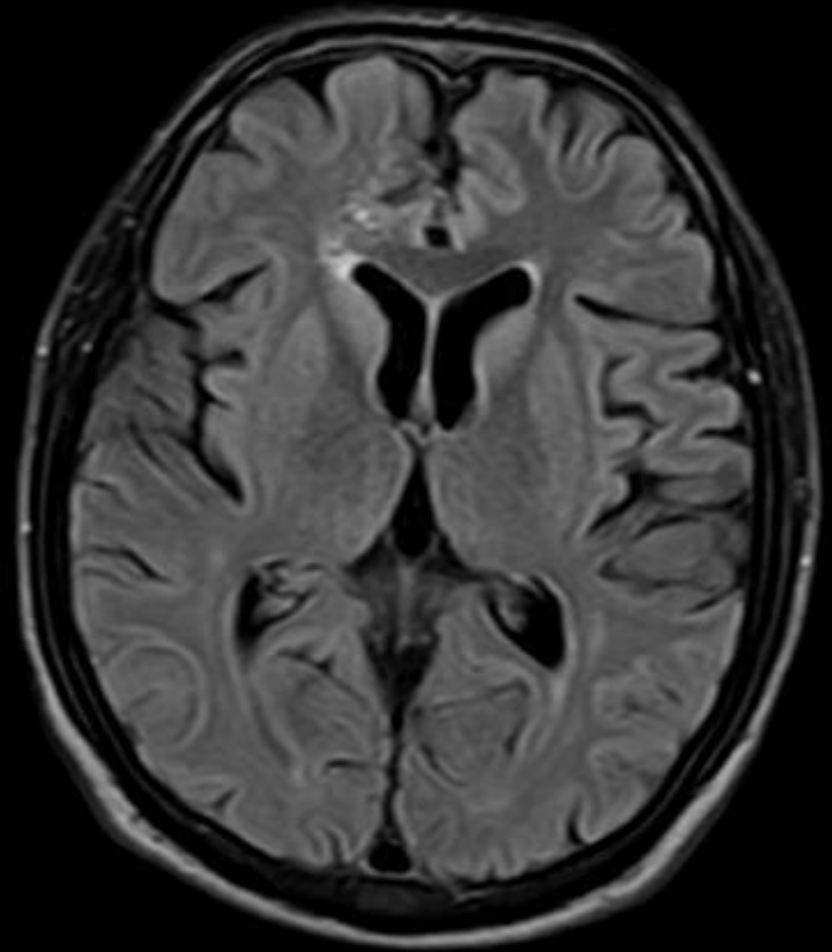
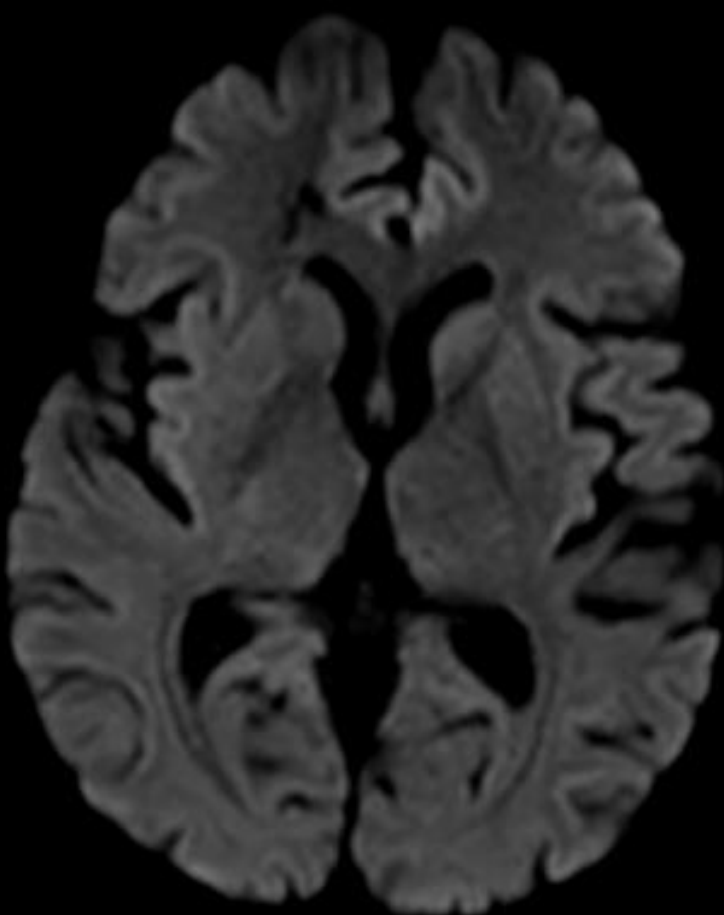
## Secondary occlusion



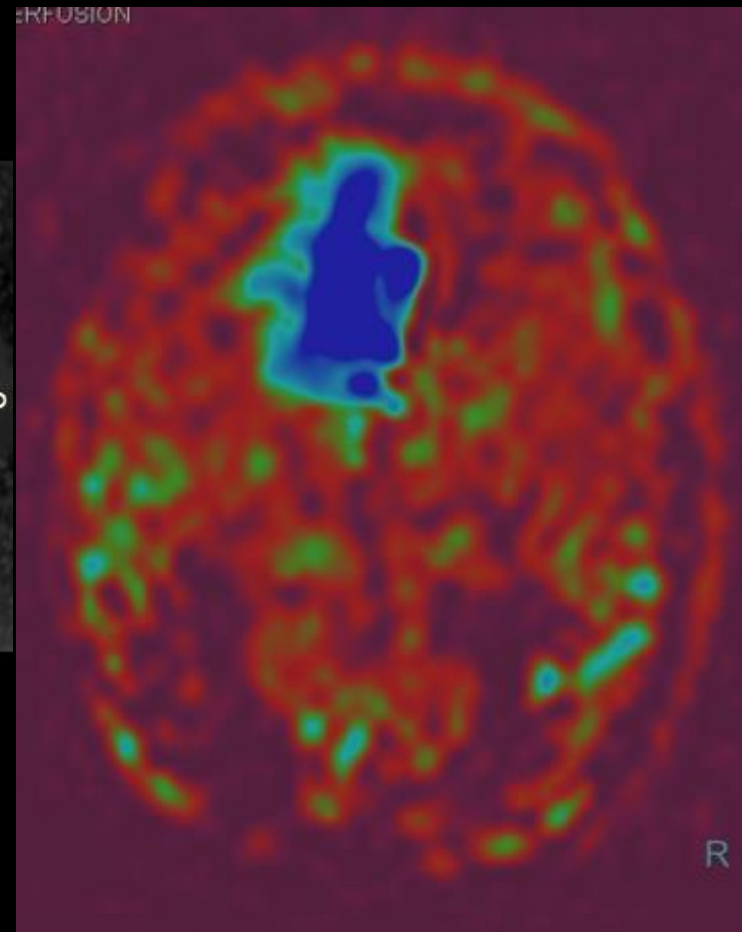
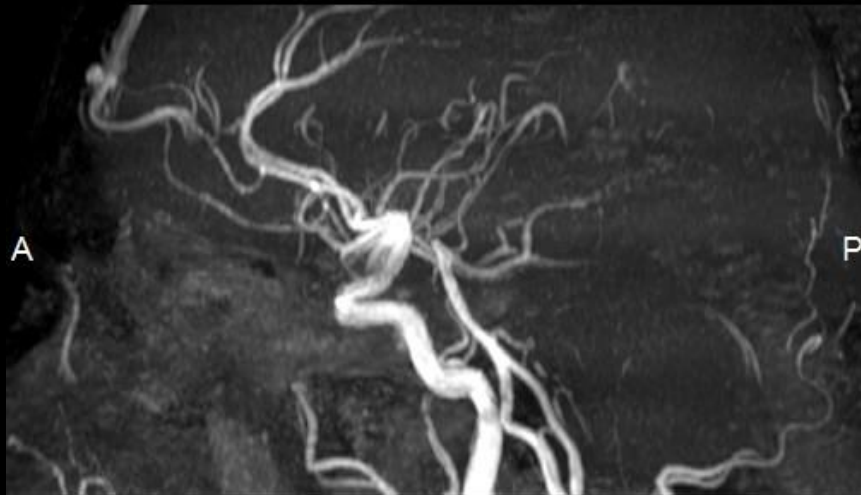
# Skull base osteomyelitis



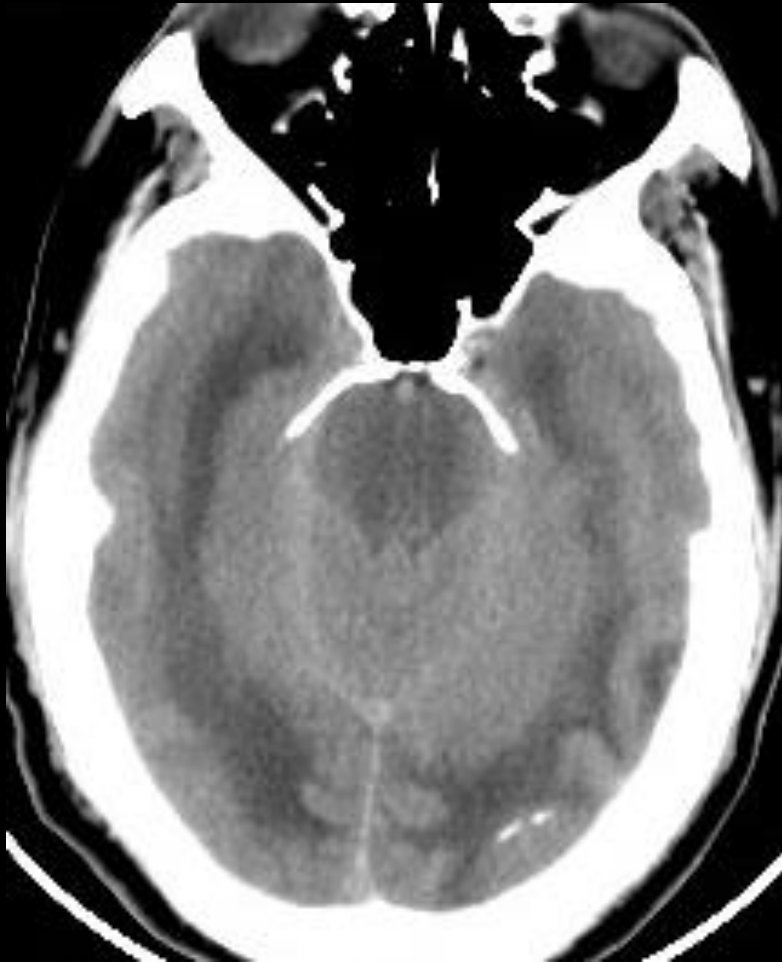
## Other Vascular causes



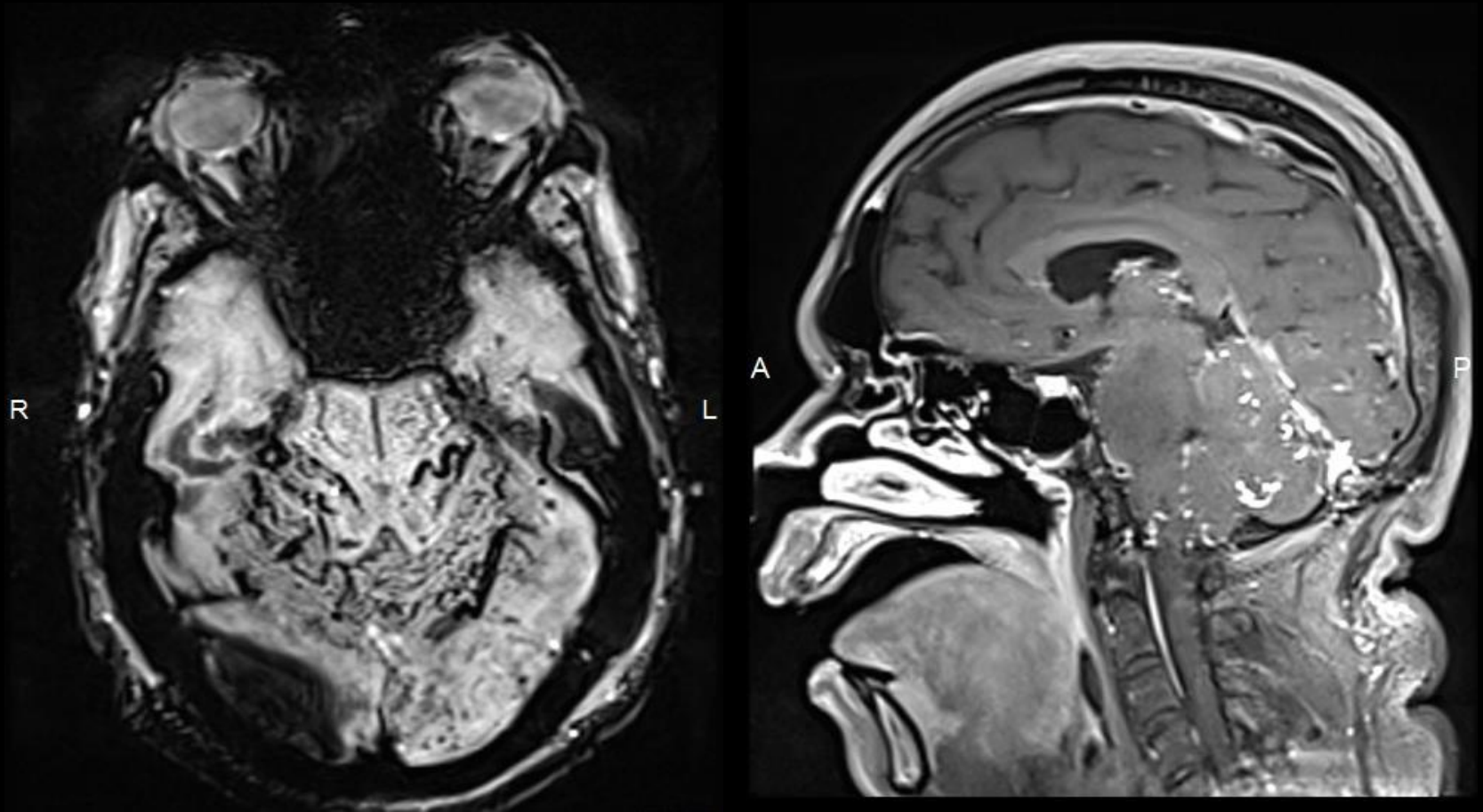
# Cryptic pial AVM / transitional DVA



## Other Vascular causes

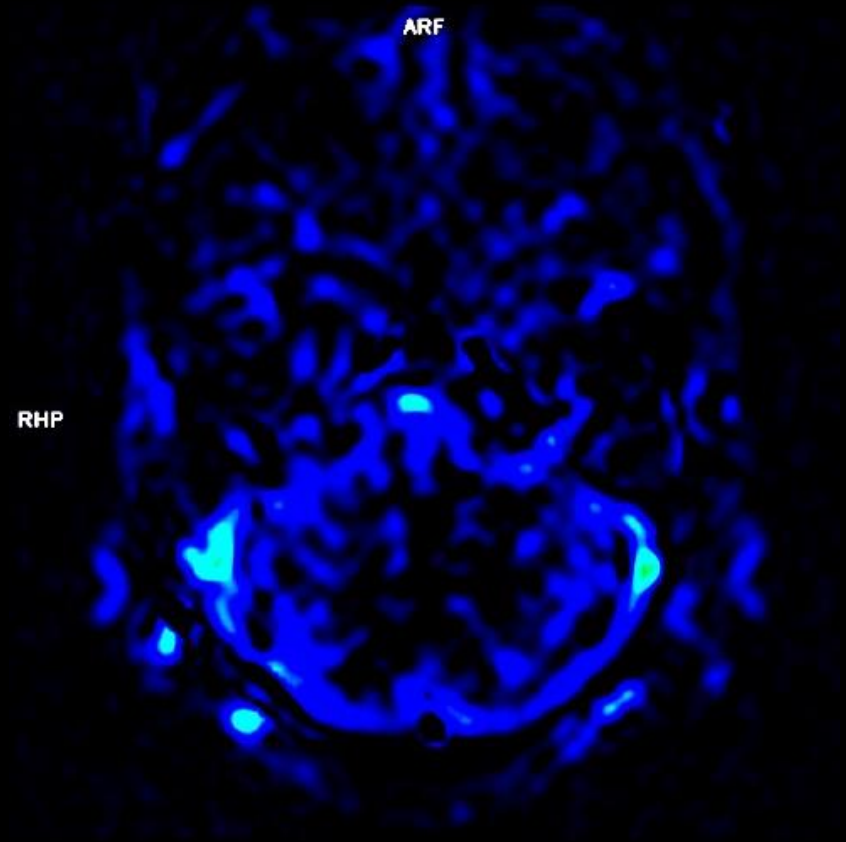


## Other Vascular causes



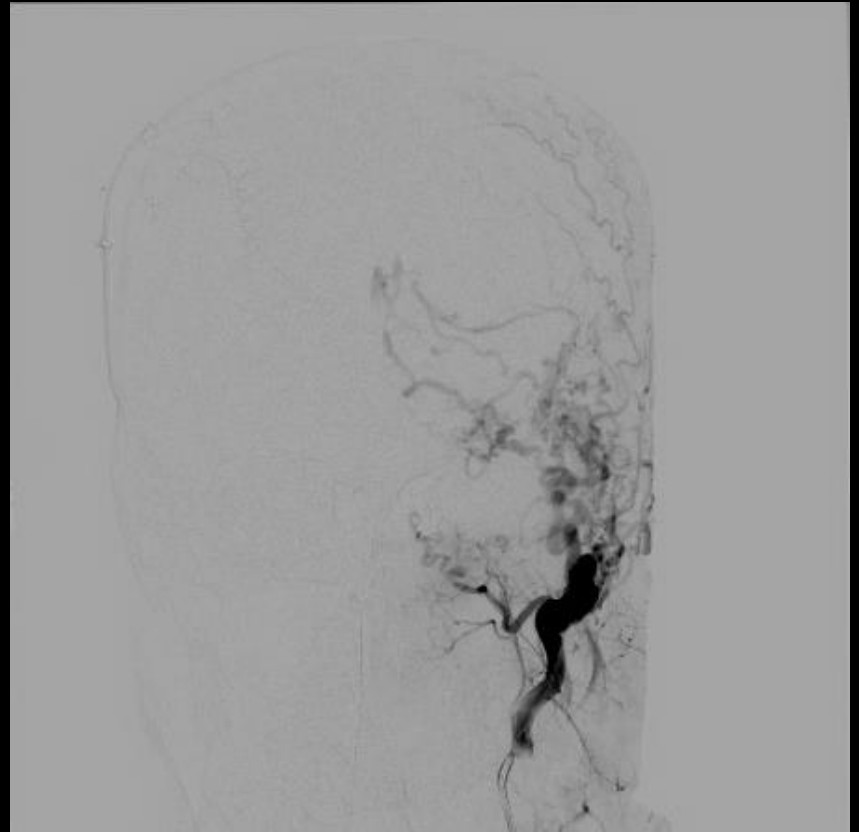
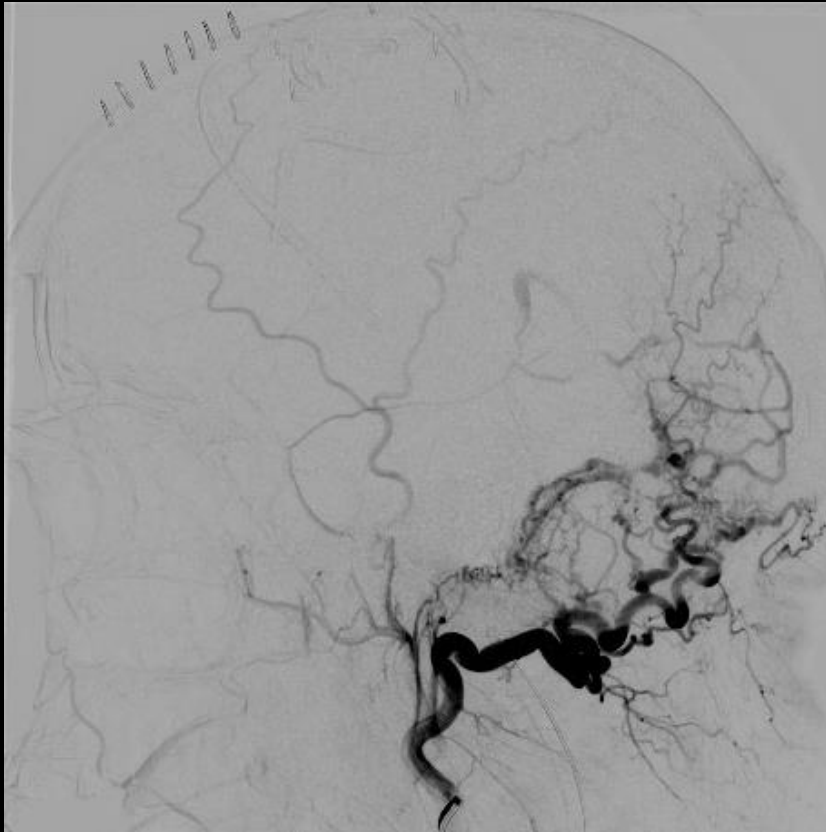


## Other Vascular causes

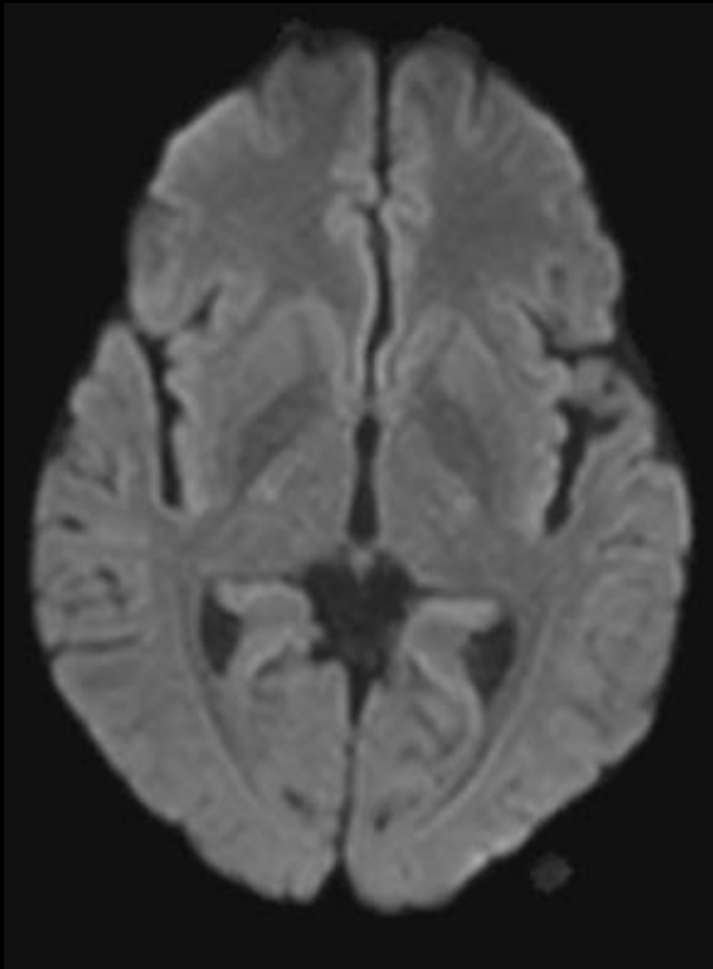




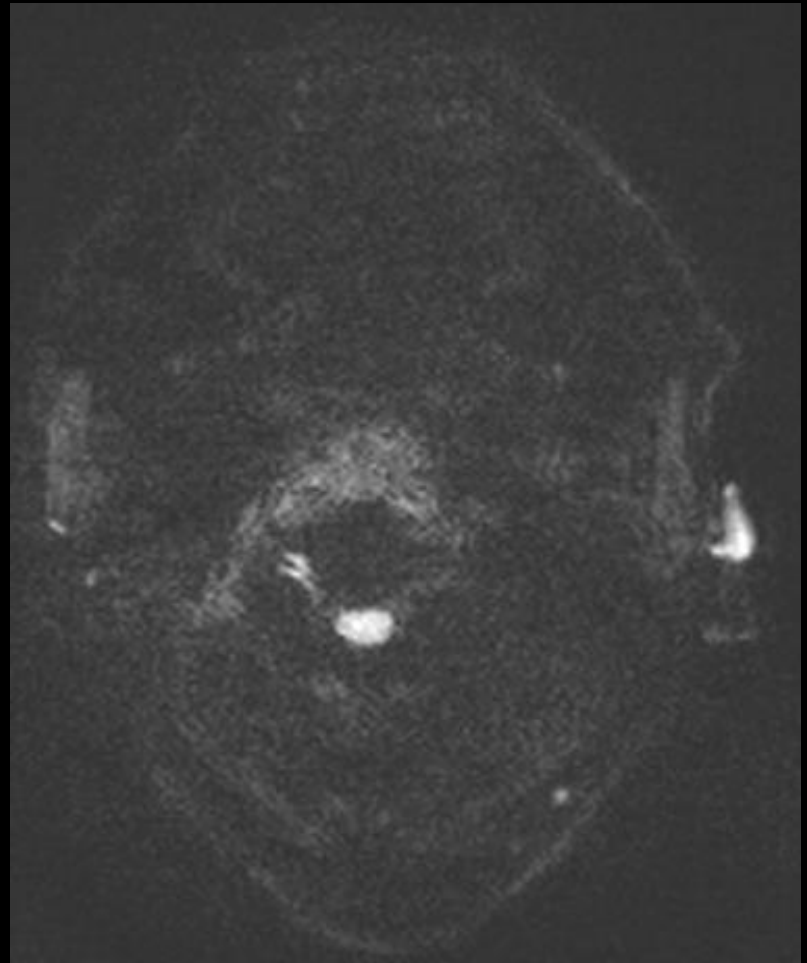
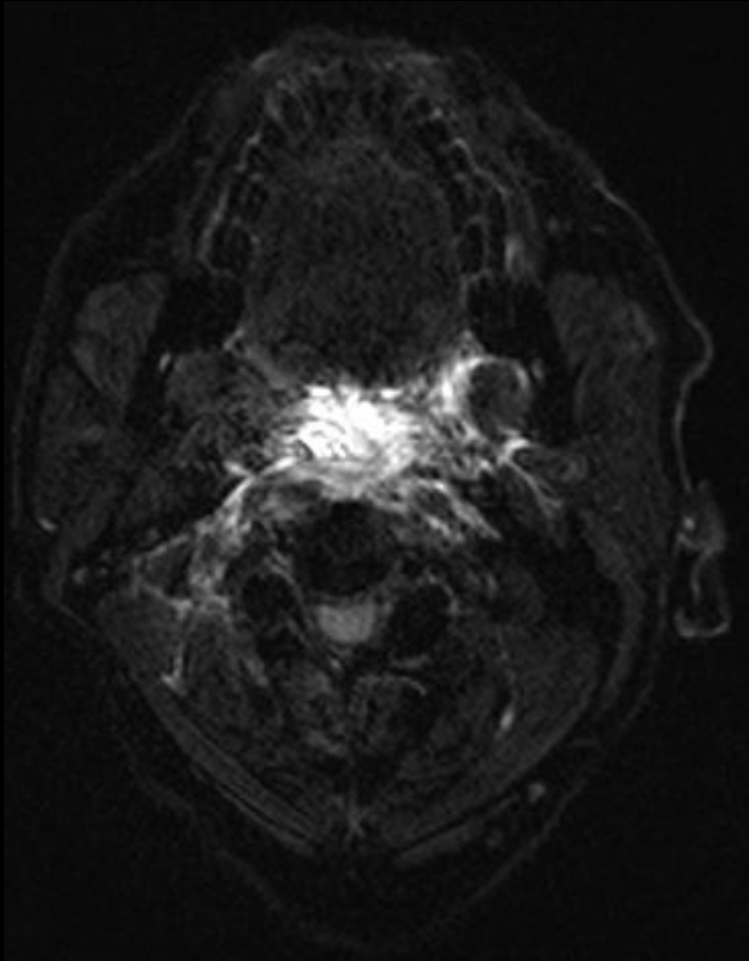
# Dural AV fistula



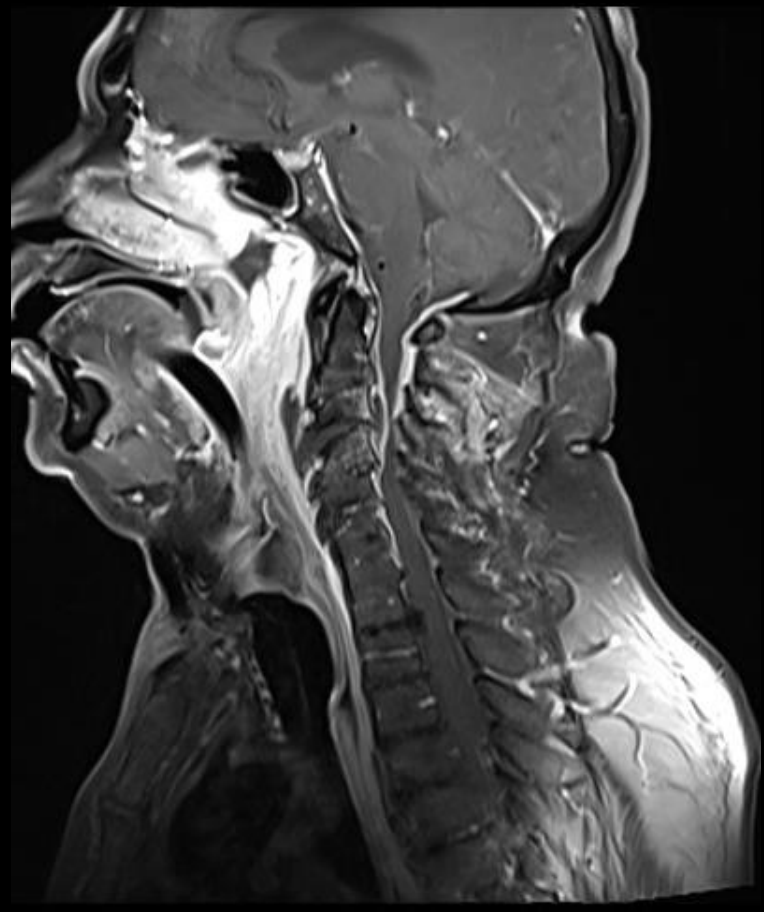
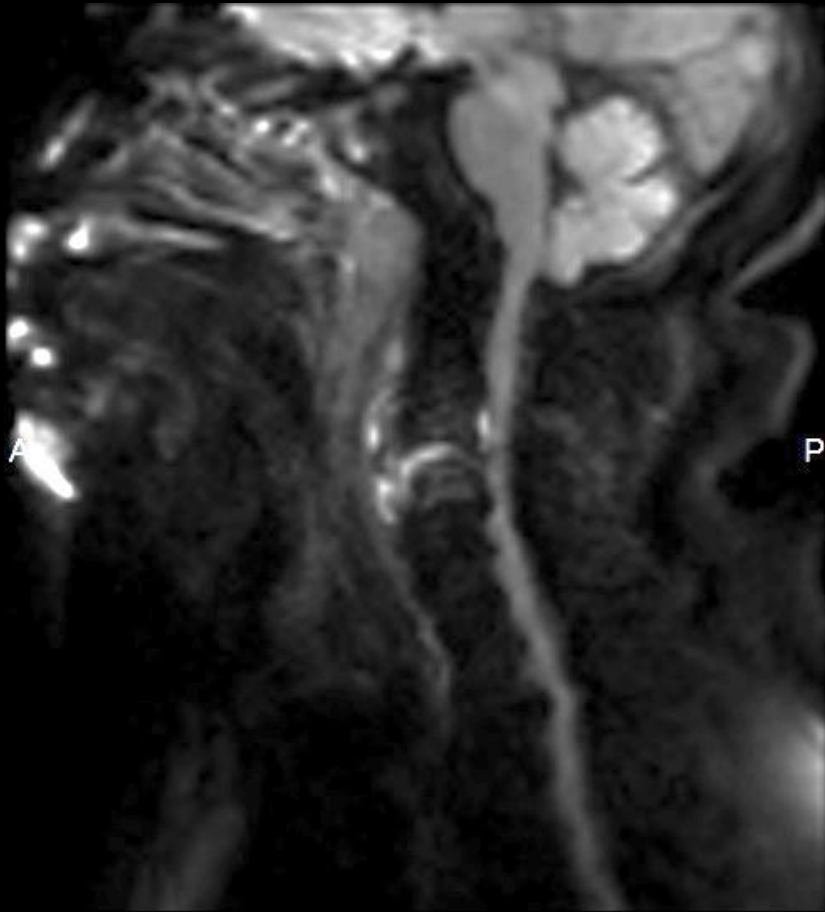
# Spinal neuraxis



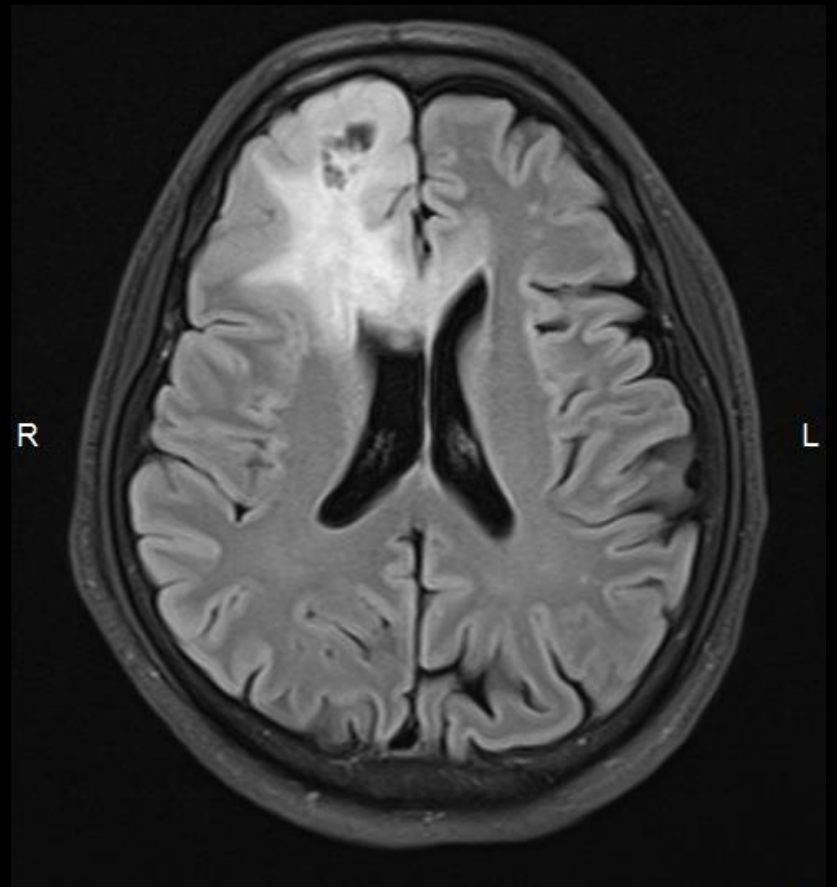
# Spinal neuraxis



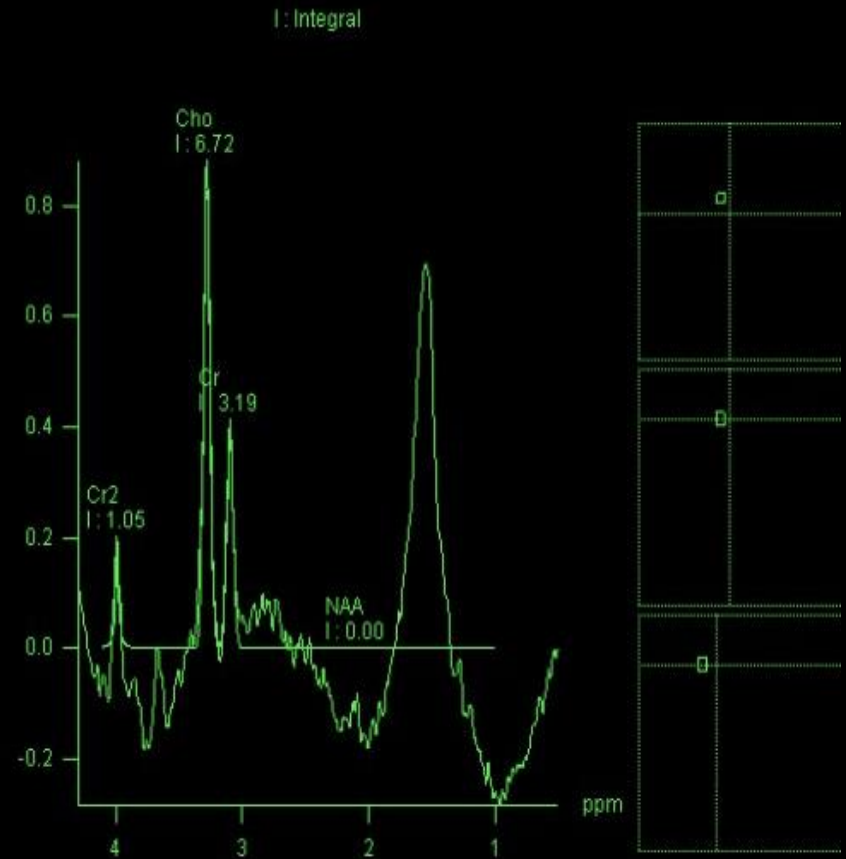
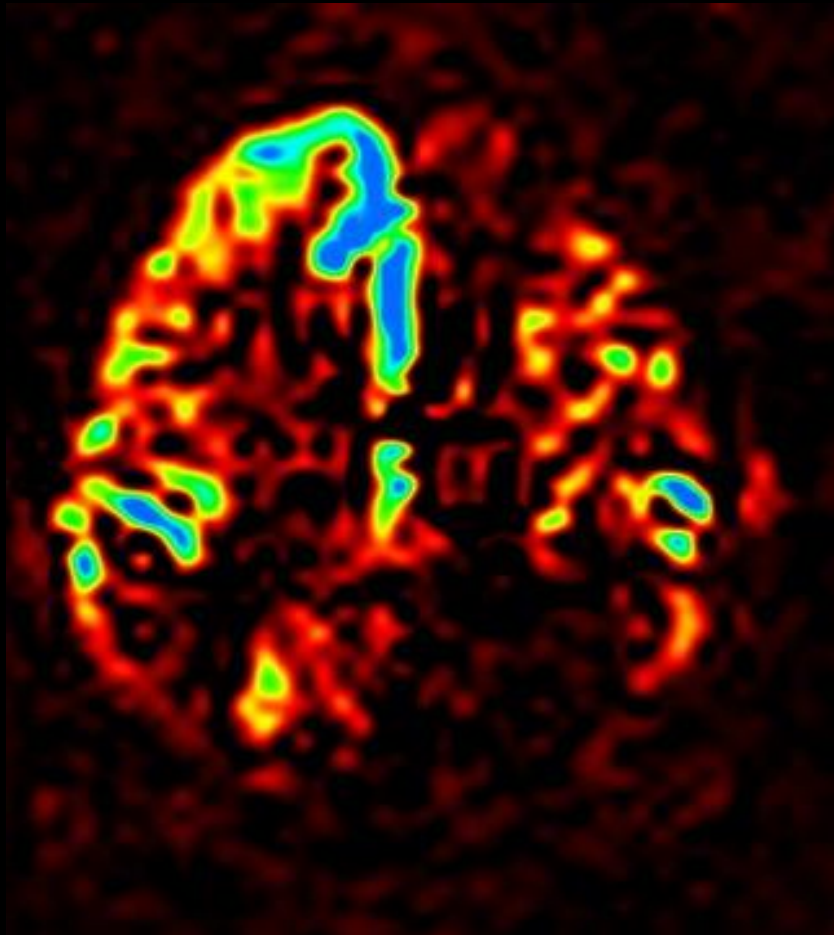
# Epidural abscess



# Miscellaneous

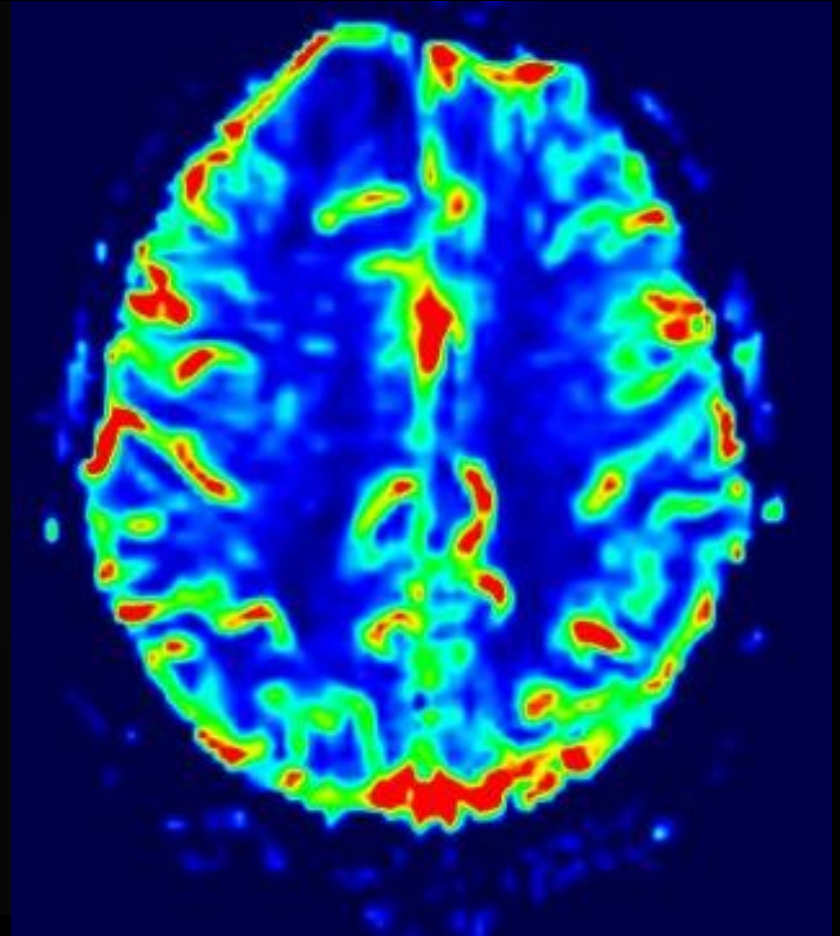
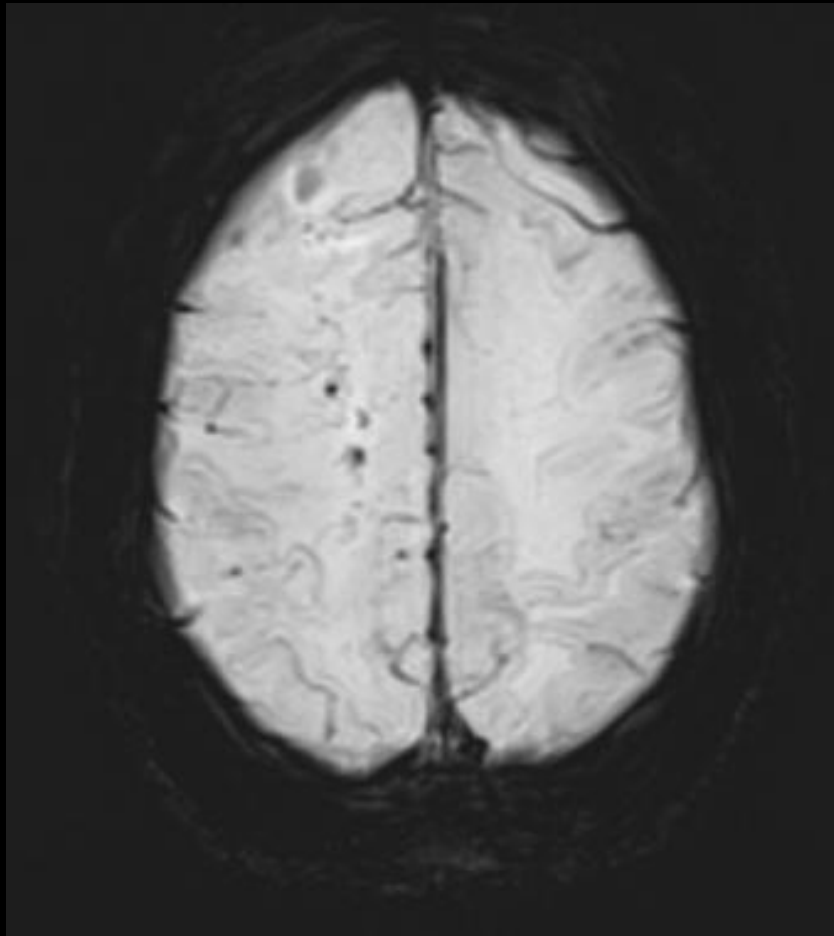


# Sol - glioma



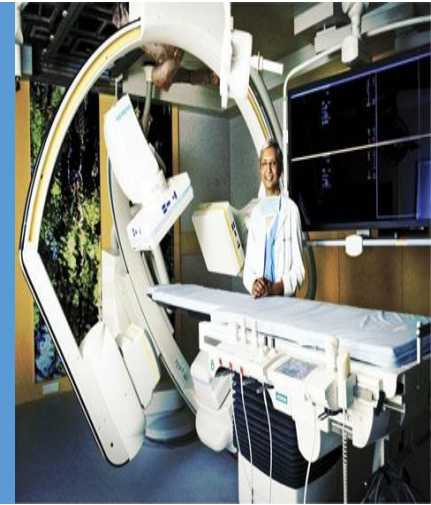


# Enigmas





THANK YOU



Acknowledgements

Fellows and Residents

Department of Interventional radiology and Imaging Sciences

KMCH Coimbatore